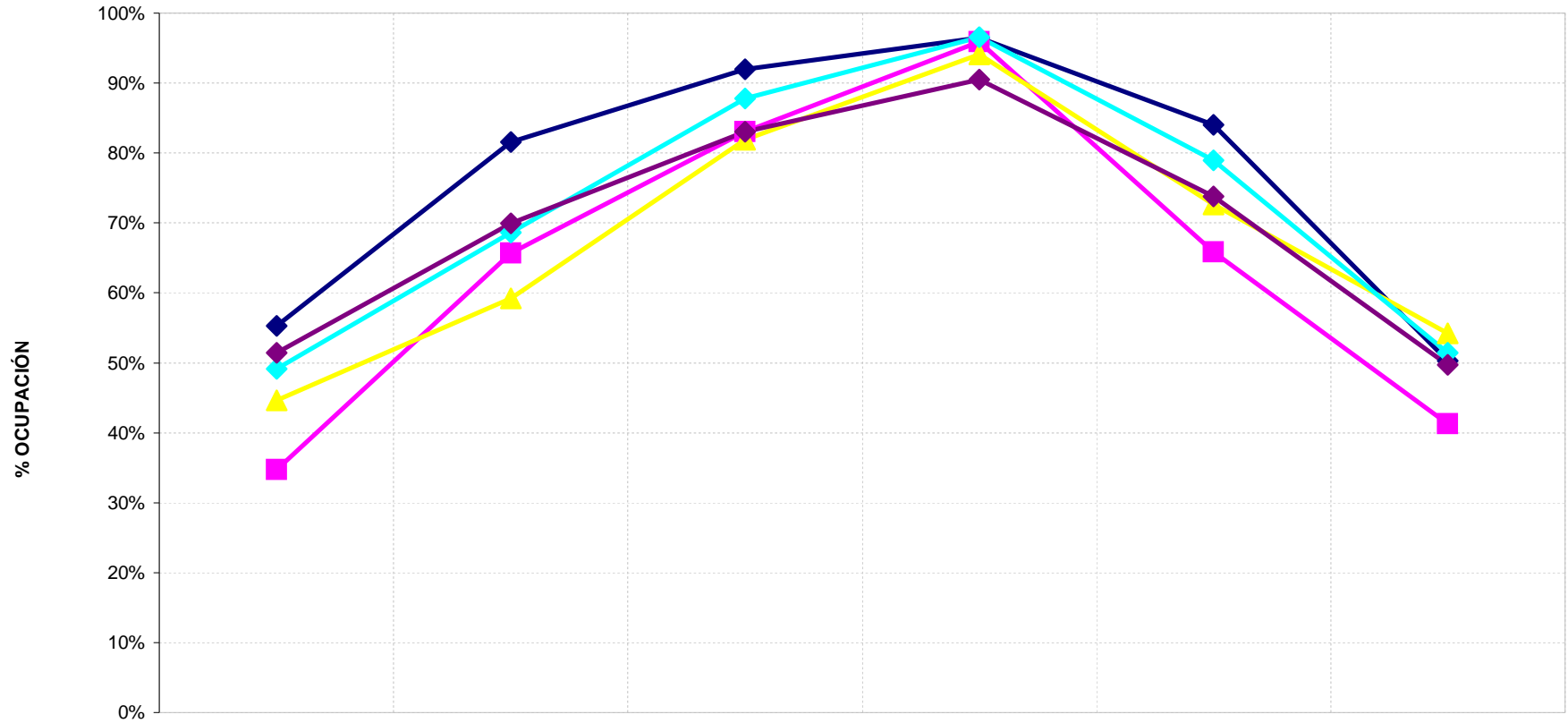


### EVOLUCIÓN OCUPACIÓN TEMPORADA 2010 POR ZONAS TURÍSTICAS



	may-10	jun-10	jul-10	ago-10	sep-10	oct-10
◆ Ibiza	55,29%	81,58%	91,94%	96,50%	84,01%	50,25%
■ Calas de San José	34,70%	65,71%	83,05%	95,87%	65,81%	41,24%
▲ San Antonio y Bahía	44,61%	59,25%	81,89%	94,09%	72,67%	54,19%
◆ Zona Norte	49,18%	68,65%	87,81%	96,55%	78,94%	51,42%
◆ Santa Eulalia	51,43%	69,98%	83,08%	90,50%	73,76%	49,68%